



# MILWAUKEE VOLLEYBALL GAME NOTES

10 NCAA TOURNAMENTS | 14 CONFERENCE CHAMPIONSHIPS | 12 ALL-AMERICANS

MKEPanthers.com || @MKE\_Volleyball || Contact: Sean Engel || Email: engelsf@uwm.edu || Office/Cell: 414-435-8118

## 2023 SCHEDULE / RESULTS

Date	Opponent	TV	Time
<b>August</b>			
25	at Western Michigan		L, 1-3
26	vs. Northern Iowa		L, 0-3
26	vs. Villanova		L, 2-3
<b>September</b>			
1	vs. California Baptist		11:00 am
1	vs. Montana State		4:00 pm
2	at St. Thomas (Minn.)		2:00 pm
4	<b>NORTHWESTERN</b>	<b>ESPN+</b>	<b>6:00 pm</b>
8	vs. Idaho		10:00 am
8	vs. Western Illinois		3:00 pm
9	at SIUE	<b>ESPN+</b>	1:00 pm
12	<b>DEPAUL</b>	<b>ESPN+</b>	<b>6:00 pm</b>
14	<b>MARQUETTE</b>	<b>ESPN+</b>	<b>6:00 pm</b>
15	<b>AIR FORCE</b>	<b>ESPN+</b>	<b>6:00 pm</b>
19	at Chicago State		6:00 pm
22	<b>IUPUI *</b>	<b>ESPN+</b>	<b>6:00 pm</b>
23	<b>PURDUE FORT WAYNE *</b>	<b>ESPN+</b>	<b>4:00 pm</b>
29	at Robert Morris *		5:00 pm
30	at Youngstown State *		1:00 pm
<b>October</b>			
3	<b>GREEN BAY *</b>	<b>ESPN+</b>	<b>6:00 pm</b>
6	<b>NORTHERN KENTUCKY *</b>	<b>ESPN+</b>	<b>6:00 pm</b>
7	<b>WRIGHT STATE *</b>	<b>ESPN+</b>	<b>4:00 pm</b>
13	at Oakland *	<b>ESPN+</b>	5:00 pm
14	at Cleveland State *		3:00 pm
20	at Purdue Fort Wayne *	<b>ESPN+</b>	5:00 pm
21	at IUPUI *		3:00 pm
27	<b>YOUNGSTOWN STATE *</b>	<b>ESPN+</b>	<b>6:00 pm</b>
28	<b>ROBERT MORRIS *</b>	<b>ESPN+</b>	<b>4:00 pm</b>
31	at Green Bay *	<b>ESPN+</b>	6:00 pm
<b>November</b>			
3	at Wright State *		5:00 pm
4	at Northern Kentucky *		2:00 pm
10	<b>CLEVELAND STATE *</b>	<b>ESPN+</b>	<b>6:00 pm</b>
11	<b>OAKLAND *</b>	<b>ESPN+</b>	<b>4:00 pm</b>
17	Horizon Quarterfinals		TBA
18	Horizon Semifinals		TBA
19	Horizon Championship		TBA

\*Horizon League Game | All times Central  
**HOME GAMES IN BOLD**

ESPN+ is offered at a price of \$9.99/month or \$99.99/year. Fans can sign-up or cancel at anytime.

It is also available as part of a bundle offer that gives subscribers access to Disney+, Hulu, and ESPN+ for \$13.99/month.

MATCH 4

## MILWAUKEE vs CALIFORNIA BAPTIST

September 1, 2023 | Schoenecker Arena | St. Paul, Minnesota | 11:00 am



**PANTHERS**  
0-3, 0-0 Horizon



**LANCERS**  
1-2, 0-0 Western Athletic



MATCH 5

## MILWAUKEE vs MONTANA STATE

September 1, 2023 | Schoenecker Arena | St. Paul, Minnesota | 4:00 pm



**PANTHERS**  
0-3, 0-0 Horizon



**BOBCATS**  
3-0, 0-0 Big Sky



MATCH 6

## MILWAUKEE at ST. THOMAS (MINN.)

September 2, 2023 | Schoenecker Arena | St. Paul, Minnesota | 2:00 pm



**PANTHERS**  
0-3, 0-0 Horizon



**TOMMIES**  
0-3, 0-0 Summit



MATCH 7

## MILWAUKEE vs NORTHWESTERN

September 4, 2023 | Klotsche Center | Milwaukee, Wisconsin | 6:00 pm



**PANTHERS**  
0-3, 0-0 Horizon



**WILDCATS**  
1-2, 0-0 Big Ten



## QUICK NOTES

» The Milwaukee Volleyball Team heads West to St. Paul, Minnesota for a trio of matches against programs that the Panthers have never met before. Following the weekend in the Twin Cities, Milwaukee welcomes Northwestern to the Klotsche Center for just the second time in program history for its 2023 home opener.

» The Panthers are led by head coach Susie Johnson, who enters her 17th season at the helm of the program and her 27th season overall with the program. Over her first 26 years, Johnson has been a part of 490 Panther wins, including 264 as head coach.

## HEAD TO HEAD

CATEGORY	MILWAUKEE	CAL BAPTIST	MONTANA STATE	ST. THOMAS	NORTHWESTERN
Kills (Team/Opp)	131/172	163/176	151/162	157/181	132/146
Errors (Team/Opp)	54/67	55/56	60/75	74/71	71/61
Attempts (Team/Opp)	381/405	447/469	399/390	469/477	374/386
Attacking Percent (Team/Opp)	.202/.259	.242/.256	.228/.223	.177/.231	.163/.220
Assists (Team/Opp)	121/164	153/160	143/154	152/170	114/139
Assists per Set (Team/Opp)	10.1/13.7	11.8/12.3	11.0/11.8	11.7/13.1	9.5/11.6
Service Aces (Team/Opp)	12/20	33/19	24/16	22/15	12/10
Digs (Team/Opp)	137/170	194/203	134/164	194/204	147/145
Total Blocks (Team/Opp)	28/22	19/26.5	29/23	20/27	22.5/30

**General Information**

Location	Milwaukee, Wis.
Founded	1885
Enrollment	24,836
Nickname	Panthers
Colors	Black and Gold
Field/Capacity	Klotsche Center/2,500
Affiliation	NCAA Division I
Conference	Horizon League
Chancellor	Mark Mone
Director of Athletics	Amanda Braun
Associate AD/SWA	Kathy Litzau
Ticket Office Phone	414-229-5886

**Team History**

First Year of Volleyball	1973
All-Time Record	1132-683-9
First Year in Division I	1990
NCAA Division I Record	565-430
NCAA Tournament Appearances	10
Last NCAA Appearance	2013
Last NCAA Opponent	Wisconsin
Result	L, 3-0

**2022 Team Information**

Overall Record	10-20
Home/Away/Neutral	6-4/3-10/1-6
Horizon Record	9-9
League Finish	5th/10
League Tournament Finish	Loss in Quarterfinals
Starters Returning/Lost	7/0
Letterwinners Returning/Lost	13/0

**Coaching Staff**

Head Coach	Susie Johnson
	Idaho State '93
Milwaukee Record	264-203
Office Phone	414-229-4483
Associate Head Coach	Lindsey Vanden Berg
	Milwaukee '03
Assistant Coach	Nikki Zimmerman
	Iowa '14
Assistant Coach	Will Hall
	UW-Stout '00
Athletic Trainer	Katie Wissing
	Saint Louis '21

**Media Relations**

Director of Ath. Comm./VB Contact	Sean Engel
Office/Cell Phone	414-435-8118
E-mail	engelsf@uwm.edu
Assistant AD Communications	Chris Zills
Athletic Communications Assistant	Seth Dittmer
Content Creation & Strategy	Rachel Klemp
Multimedia Services	Andrew Levesque
Athletics Website	www.mkepanthers.com

**2023 HORIZON LEAGUE STANDINGS**

Team	Horizon League			Overall			Strk
	W	L	Pct.	W	L	Pct.	
Cleveland State	0	0	---	3	0	1.000	W3
Green Bay	0	0	---	2	1	.667	W1
IUPUI	0	0	---	2	1	.667	L1
Northern Kentucky	0	0	---	1	2	.333	L1
Oakland	0	0	---	1	2	.333	W1
Robert Morris	0	0	---	1	2	.333	L1
Wright State	0	0	---	1	2	.333	L1
Youngstown State	0	0	---	1	2	.333	L2
Milwaukee	0	0	---	0	3	.000	L3
Purdue Fort Wayne	0	0	---	0	3	.000	L3

**AROUND THE HORIZON LEAGUE**

<b>September 1</b>	Cleveland State vs. Florida Atlantic .....	9:30 am
	Green Bay vs. South Alabama .....	12:00 pm
	Oakland at Eastern Michigan .....	2:00 pm
	Wright State vs. Loyola Chicago .....	2:00 pm
	Youngstown State vs. Memphis .....	3:00 pm
	Purdue Fort Wayne vs. Stony Brook .....	3:00 pm
	Oral Roberts at IUPUI .....	5:00 pm
	Cleveland State at Miami (Ohio) .....	6:00 pm
	Northern Kentucky at Missouri .....	6:00 pm
<b>September 2</b>	Oakland vs. Western Illinois .....	10:00 am
	Canisius at Robert Morris .....	10:00 am
	Purdue Fort Wayne at St. Francis (Pa.) .....	10:00 am
	Youngstown State vs. Virginia Tech .....	11:00 am
	Northern Kentucky vs. Louisville .....	11:00 am
	Eastern Illinois at IUPUI .....	12:30 pm
	Green Bay vs. Western Carolina .....	1:00 pm
	Cleveland State vs. Eastern Kentucky .....	1:00 pm
	Wright State at Bowling Green .....	1:00 pm
	Purdue Fort Wayne vs. Manhattan .....	3:30 pm
	Duquesne at Robert Morris .....	5:00 pm
	Oakland at Valparaiso .....	5:00 pm
<b>September 3</b>	Northern Kentucky vs. South Dakota .....	12:00 pm
	Green Bay at Clemson .....	1:00 pm
<b>September 6</b>	Akron at Cleveland State .....	5:00 pm
<b>September 7</b>	IUPUI vs. South Florida .....	2:00 pm
	Green Bay vs. Montana .....	4:00 pm

**HORIZON LEAGUE STATISTICAL LEADERS****Hitting Percent**

1. Morgan Ostrowski (IUPUI) .....	.412
2. Skyy Smith (NKU) .....	.405
3. Aaliyah Byers (WSU) .....	.387
4. Reilly Zegunis (WSU) .....	.382
5. Ari Miller (MKE) .....	.380

**Kills/Set**

1. Laken Voss (CSU) .....	3.91
2. Joy Banks (NKU) .....	3.70
3. Gentry Brown (OAK) .....	3.57
4. Jazmin Vergara (YSU) .....	3.57
5. Maia Long (IUPUI) .....	3.31

**Assists/Set**

1. Calli Gentry (GB) .....	11.00
2. Katie Meyer (WSU) .....	9.70
3. Grace Purichia (IUPUI) .....	7.62
4. Karly Klaer (CSU) .....	7.55
5. Taya Haffner (PFW) .....	7.30

**Service Aces/Set**

1. Andrew Bortulin (WSU) .....	1.00
2. Skyy Smith (NKU) .....	0.50
3. Ashleigh Wallin (RMU) .....	0.50
Natalie Stepanovich (RMU) .....	0.50
5. Two players tied .....	0.46

**Blocks/Set**

1. Madison Olinger (CSU) .....	1.82
2. Skyy Smith (NKU) .....	1.50
3. Tiffany Paalman (GB) .....	1.44
4. Julia Sell (YSU) .....	1.38
5. Allie Siefke (NKU) .....	1.14

**Digs/Set**

1. Isidora Sisic (YSU) .....	5.23
2. Emily Eichmann (OAK) .....	5.08
3. LonDynn Betts (PFW) .....	4.20
4. Anna Burke (NKU) .....	4.10
5. Allena Carmody (RMU) .....	3.92

## GAME NOTES

**SCOUTING THE COMPETITION – CALIFORNIA BAPTIST**

California Baptist started the season at the Santa Clara Tournament in California, the Lancers went 1-2 with a win over California State Northridge in four sets, while dropping a five-set decision to Jacksonville and a four-set loss to host Santa Clara. Last season, CBU finished with a 12-14 overall mark and a 7-7 record in WAC matches.

California Baptists' offense can come at teams in multiple directions, with four players over the 20-kill plateau through the team's first three matches. Michalina Rola leads the team with 43 kills and is also tied for the team lead with nine aces. Graduate student Catherine Krieger has been a force off the bench for the Lancers with 30 kills in three matches. Junior Laura Walewska blocks up the middle of the net on the defensive side with 10 blocks on the young season, while four players have at least 34 digs on the year including a team-best 42 by Rola.

**SCOUTING THE COMPETITION – MONTANA STATE**

Coming off a 3-0 weekend to open the season, the Bobcats knocked off Oregon State, North Dakota, and Kennesaw State at home at the Bobcat Blackridge Invite. The team is off to a quick start following last season's 14-16 record with a 9-7 mark in the Big Sky Conference.

Following the team's unbeaten start to the year Kira Thompson was named the Big Sky Offensive Player of the Week. In Montana State's matches the senior totaled 45 kills and hit .224 while also adding seven aces and seven blocks to her 55.5 points this season. Jourdain Kamps is second on the team with 39 kills, while Madilyn Siebler is not far off the pace with 35 kills for a team that has hit .228 on the year so far. Avery Turnage is the team's leader in blocks with 15 on the year including 10 against North Dakota, while Lauren Lindseth tallied 42 digs nearly twice as many as her closest teammate.

**SCOUTING THE COMPETITION – ST. THOMAS**

In just its third season in NCAA Division I, St. Thomas is one of the youngest athletic departments at the top level of NCAA and comes with a strong pedigree of success from its time at the NCAA Division III level. In its first two-plus seasons in Division I, the team has only tallied seven wins, while starting the 2023 campaign 0-3 with losses to UIC, Lindenwood, and Oakland.

Lauren Galvin has recorded double-figure kills in each of the Tommies' first three matches including a season-high 13 against Lindenwood with a team-high 34 kills. Emma Goerger is second on the team with 31 kills, while freshman setter Morgan Kealy leads the squad with five aces and 114 assists. Goerger is the team leader at the net with 11 blocks for the 6'4" middle blocker, while 5'6" defensive specialist Ella Voegelé recorded 22 of her team-leading 52 digs in the season opener against UIC.

**SCOUTING THE COMPETITION – NORTHWESTERN**

After meeting in the spring season earlier this year, the Panthers will host the Northwestern Wildcats for its home opener on September 4. Northwestern opened its season with a 1-2 record in Hawai'i, with the one win coming over No. 13 San Diego in four sets, while dropping a five-setter to host Hawai'i and falling in straight sets to No. 9 Oregon.

Julia Sangiacomo has been off to a torrid start in her first season in Evanston following a successful four-year career at Santa Clara; Sangiacomo has a team-best 48 kills and a .161 hitting percentage for a team that has only hit .163 this season. Alexa Rousseau has 92 assists on the young season, while she along with Ellee Stinson lead Northwestern with three aces apiece. Leilani Dodson has 15 blocks including four solo blocks, with Stinson picking up a team-best 58 digs on the defensive side of the ball.

**SERIES HISTORY**

The trip to Minnesota this weekend will be filled with firsts for the Panthers as Milwaukee has never dueled with California Baptist, Montana State, nor St. Thomas. Following the weekend, the team will have played four consecutive matches against first-time opponents dating back to the team's matchup with Villanova on August 26.

Despite their proximity, Milwaukee and Northwestern are only meeting for the sixth time in program history, and just the second time ever in Milwaukee. The Wildcats own a 5-0 mark against the Panthers, with the most recent matchup coming on August 25, 2018, in Milwaukee, where the Panthers fell in four sets. The Panthers forced the Wildcats to five sets in their 22013 meeting, which came in Kalamazoo, Michigan.

**LAST TIME OUT**

Milwaukee traveled to Michigan to take part in the Western Michigan Tournament in Kalamazoo, the Panthers went 0-3 over the trio of contests but improved each time out culminating with a five-set marathon against Villanova on Saturday afternoon.

Four Panthers had 20 points or more to start the season as Ari Miller led the way with 47 points on 37 kills, with five aces and 10 blocks; Natalie Schmitz was second on the team with 37.5 points, followed by Madi Malone with 33.5, and Czen Beneby with 20 points.

**ALL-TOURNAMENT TEAM**

Following her performance at the Western Michigan Tournament, Ari Miller was selected as Milwaukee's representative on the All-Tournament Team. After hitting just .214 in the season

opener against host Western Michigan, Miller hit .471 over the final two matches against Northern Iowa and Villanova.

Miller had 19 kills in the team's match against Villanova on Saturday, which was the most for the senior in a single match since the 2021 campaign when she wrapped up the year with 19 in the Horizon League Tournament against UIC.

**BLOCK PARTY 2023**

Following 179 blocks in 2019, the Panthers have increased their team's total block total every season, with 180 in 2021, and 211 in 2022. Through three matches Milwaukee has 28 blocks and are on a strong pace to continue their upward trend in 2023.

The Panthers are currently tied for third in the Horizon League with their 28 blocks but are tied for the top spot in the league with 12 solo blocks thus far. Czen Beneby with five, and Lakyn Graves with four are both within the top four among Horizon League student-athletes in solo blocks.

**NO SOPHOMORE SLUMP HERE**

Following strong freshman campaigns in 2022 Natalie Schmitz and Josie Johnson both reached new career-high marks at their respective positions during the opening trio of matches in Michigan.

Schmitz secured a career-best 17 kills and tied her career-high with 42 attempts in the team's five-set match versus Villanova. Johnson also reached a career-high mark in the match against the Wildcats with 30 assists.

**DOUBLE-QUARTER**

In the team's match versus Villanova, Josie Johnson (30) and Kaley Blake (26) both accumulated more than 25 assists each for just the second time in their career together. The first instance came on October 18 of the 2022 season, when Johnson had 26 and Blake had 29 against IUPUI.

The last time two setters had more than 30 assists in a single match came back on August 29, 2021, when Blake had 32 assists and former teammate Rylie Vaughn had 31 in the team's five-set match against Valparaiso at the Klotsche Center.

**THE MILLENNIUM IS COMING**

This season, Milwaukee will play its 1,000th match as a Division I program in its 34th season of competition at the highest collegiate level. The match is scheduled to take place on Friday, September 8, when the Panthers take on Western Illinois in Edwardsville, Illinois as part of the Cougar Classic.

Milwaukee played its first Division I match on August 31, 1990 against Wright State before taking on Western Illinois later in the day at a tournament hosted by the Leathernecks.

**PRESEASON POLL**

The Horizon League announced its preseason poll on Thursday afternoon, with the Milwaukee Panthers projected to finish fourth in the league as voted on by the coaches in the league.

The Panthers finished with 73 points just three points behind Green Bay, while Wright State was first in the poll with 99 points after accumulating nine of 10 first-place votes. Northern Kentucky received the final first place vote and finished with 85 points.

**AVCA TEAM ACADEMIC AWARD**

Back in July the Milwaukee volleyball team was recognized for its efforts in the classroom by the American Volleyball Coaches Association and were one of 201 Division I programs to earn academic recognition.

Teams are recognized for having a grade-point average of 3.30 or above on a 4.00 scale. The Panthers had a 3.67 combined team GPA in the fall 2022 term and a 3.71 this past spring semester.

**LOOKING AHEAD**

Following the conclusion of the team's trip to Minnesota, and the home opener against Northwestern on Monday. The Panthers will be back on the road to take on Idaho and Western Illinois on September 8 before taking on host SIUE at the SIUE Tournament in Edwardsville, Illinois. With one of the longest travel stretches of the season, the Panthers will be home for five of its next six matches beginning with DePaul on September 12.

**YOU ARE LOOKING LIVE**

Thanks to ESPN+, Milwaukee volleyball will be readily available for viewers. The Horizon League and ESPN have an agreement that includes ESPN hosting the league's digital network on the ESPN+ platform. ESPN+, which will host the Horizon League women's soccer, men's soccer, and volleyball

## MILWAUKEE VOLLEYBALL ROSTER

No.	Name	Pos.	Ht.	Yr.	Hometown (High School/College)
1	Tatum Catalano	OH/RS	6-0	Jr.	Germantown, Wis. (Germantown)
2	Bri Geurts	RS/MB	6-0	Jr.	De Pere, Wis. (De Pere)
3	Lakyn Graves	MB	6-2	Jr.	Menomonee Falls, Wis. (Sussex Hamilton/Omaha)
4	Josie Johnson	S	5-7	So.	Burlington, Wis. (Waterford Union)
6	Ari Miller	MB	5-11	Gr.	Jackson, Wis. (Kettle Moraine Lutheran)
8	Kaley Blake	S	5-7	Sr.	Burlington, Wis. (Burlington)
9	Kati Goba	DS	5-4	Fr.	Mukwonago, Wis. (Wisconsin Lutheran)
10	Czhen Beneby	MB	6-3	So.	West Palm Beach, Fla. (Alexander W. Dreyfoos/Virginia)
11	Natalie Schmitz	OH	6-1	So.	Ham Lake, Minn. (Blaine)
12	Bella Lipski	MB	6-2	Fr.	Milwaukee, Wis. (Divine Savior Holy Angels)
13	Kara Erdmann	DS	5-6	So.	Forrester, Ill. (Forrester)
14	Madi Malone	OH	6-0	Jr.	Newark, Ill. (Newark)
15	Sarah Schrader	OH	5-8	Sr.	Sussex, Wis. (Sussex Hamilton)
16	Rachel Scott	RS	6-2	So.	Belvidere, Ill. (Belvidere North)
17	Mati Jakscht	DS	5-6	Gr.	East Troy, Wis. (East Troy)



**Tatum  
Catalano**



**Bri  
Geurts**



**Lakyn  
Graves**



**Josie  
Johnson**



**Ari  
Miller**



**Kaley  
Blake**



**Kati  
Goba**



**Czhen  
Beneby**



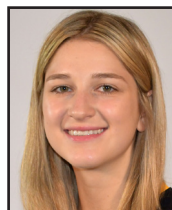
**Natalie  
Schmitz**



**Bella  
Lipski**



**Kara  
Erdmann**



**Madi  
Malone**



**Sarah  
Schrader**



**Rachel  
Scott**



**Mati  
Jakscht**

## COACHING STAFF

**Head Coach:** Susie Johnson (17th season)  
**Associate Head Coach:** Lindsey Vanden Berg (17th season)  
**Assistant Coach:** Nikki Zimmerman (third season)  
**Assistant Coach:** Will Hall (first season)

## ROSTER BY STATE

**Wisconsin:** Kaley Blake, Tatum Catalano, Bri Geurts, Kati Goba, Lakyn Graves, Mati Jakscht, Josie Johnson, Bella Lipski, Ari Miller, Sarah Schrader  
**Florida:** Czhen Beneby  
**Illinois:** Kara Erdmann, Madi Malone, Rachel Scott  
**Minnesota:** Natalie Schmitz

## PRONUNCIATION GUIDE

**Czhen Beneby** ZEN BEN-uh-bee  
**Tatum Catalano** TAY-tum cat-uh-LAH-no  
**Bri Geurts** GERTS  
**Lakyn Graves** LAY-kin  
**Mati Jakscht** YOTCH

## ROSTER BY CLASS

**Graduate Students:** Ari Miller, Mati Jakscht  
**Seniors:** Kaley Blake, Sarah Schrader  
**Juniors:** Tatum Catalano, Bri Geurts, Lakyn Graves, Madi Malone  
**Sophomore:** Czhen Beneby, Kara Erdmann, Josie Johnson, Natalie Schmitz, Rachel Scott  
**Freshman:** Kati Goba, Bella Lipski



# SUSIE JOHNSON

HEAD COACH

17TH SEASON

264-203 (.565) AT MILWAUKEE

**Susie Johnson** enters her 27th overall season with the Milwaukee volleyball program, including the last 16 seasons as head coach as she enters the 2023 season.

Johnson was named head coach in May of 2007 after 10 years as an assistant and associate head coach at Milwaukee. Since taking over the reins, Johnson has led Milwaukee to 264 wins, six regular-season titles, four league-tournament crowns, and four NCAA Tournament berths.

In her 26 total seasons at Milwaukee, the Panthers have compiled a 490-270 record. That number includes a 286-98 mark in league play and a 240-70 record at the Klotzsche Center. The Panthers have also won 159 of their 190 league matches at home with Johnson on the bench.

With half of the roster new to the Milwaukee program in 2022, the Panthers mustered 10 wins while battling through a challenging non-conference slate that included five teams that were ranked by the AVCA, including No. 11 Purdue, who was the highest ranked opponent for a Panther squad since December of 2013. Three Panthers earned postseason honors from the Horizon League as Ari Miller was a first-team honoree, Madi Malone was a second teamer, and Natalie Schmitz was a member of the All-Freshman Team. Miller went on to become a member of the Horizon All-Academic Team as well as the College Sports Communicators Academic All-District team, becoming the first Panther to receive multiple selections by CSC/CoSIDA.

Her overall run has included the first undefeated Horizon League season in 17 years, a school-record 18-match winning streak and the program's best-ever NCAA Tournament performance - a heartbreaking five-set loss to Dayton in 2009.

In 2011, the Panthers went 25-5 overall and 16-0 in league play,

becoming the first Horizon League team to go through the league schedule without a loss since Notre Dame did it in 1994. Milwaukee also set a school record with 18 straight wins and nearly upset Iowa State in the first round of the postseason.

Johnson's efforts on the recruiting trail have led to nine league newcomers of the year during her tenure, including Malone in 2022, Bridget Wallenberger in 2016, and Rachel Neuberger in 2009. Plus, 24 Panther players have earned a spot on the league's all-newcomer team in the last 24 years. Panther players have then consistently developed into the best players in the Horizon League. In her 25 seasons in Milwaukee, Johnson has coached 11 League Players of the Year, with Kerri Schuh winning the award twice and Neuberger claiming the distinction in 2013.

In all, players have earned all-league honors 66 times under Johnson and the recognition for Panther players has extended far beyond the Horizon League. With Johnson's assistance, MKE players have earned AVCA All-America honors ten times and AVCA All-Region honors 22 times. Plus, three Panthers have earned AVCA Region Freshman of the Year accolades, including Neuberger and Kayla Price.

Johnson's playing background is at setter, where she earned All-Big Sky and All-Northwest Region honors at Idaho State. She was also a two-time Academic All-Big Sky honoree and has helped direct the Panthers to great success in the classroom, with two Academic All-Americans and a team GPA above 3.3.

A native of Racine, Johnson joined the Panther staff after serving as an assistant coach at Indiana State. She also worked at Idaho State and was head coach at UW-Parkside. She lives in Racine with her husband, C.J., son Ty, daughter Josie and stepson Brody.

## Panthers 2023 Record When ...

At Home .....	0-0
On the Road .....	0-1
At a Neutral Site .....	0-2

In Three-Set Matches .....	0-1
In Four-Set Matches .....	0-1
In Five-Set Matches .....	0-1

Winning the First Set .....	0-0
Leading After Two Sets .....	0-0
Trailing After Two Sets .....	0-1
Tied After Two Sets .....	0-2

On Weekdays .....	0-1
On Weekends .....	0-2
On Mondays .....	0-0
On Tuesdays .....	0-0
On Wednesdays .....	0-0
On Thursdays .....	0-0
On Fridays .....	0-1
On Saturdays .....	0-2
On Sundays .....	0-0
In August .....	0-3
In September .....	0-0
In October .....	0-0
In November .....	0-0
vs. Horizon .....	0-0

## 2023 HORIZON LEAGUE PRESEASON POLL

School (1st place votes)	Points
1. Wright State (9)	99
2. Northern Kentucky (1)	85
3. Green Bay	76
4. Milwaukee	73
5. Cleveland State	66
6. Oakland	47
7. Purdue Fort Wayne	35
8. Youngstown State	33
T9. IUPUI	18
T9. Robert Morris	18

## IT'S "MILWAUKEE"

A lot has been made of the correct way to talk about the University of Wisconsin-Milwaukee, especially in the area of athletics. It would be appreciated if you would refer to the athletics teams as either "Milwaukee" or "MKE". Your cooperation in this matter is greatly appreciated.

Milwaukee Athletics is making an effort to brand itself as "Milwaukee" instead of other references. Please avoid UW-Milwaukee, UW-M, Wisc.-Mil, UW-MIL, Wisconsin-Milwaukee, etc. We appreciate your assistance with this effort in advance.

## 2023 OVERALL STATISTICS

##	Player	SP	Attack					Set		Serve			RE	Dig		Blocking						PTS
			K	K/S	E	TA	PCT	A	A/S	SA	SE	SA/S		DIG	DIG/S	BS	BA	TOT/S	BLK/S	BE	BHE	
2	Geurts, Bri	10	9	0.90	6	23	.130	0	0.00	0	0	0.00	0	0	0.00	2	3	5	0.50	0	0	12.5
3	Graves, Lakyn	12	5	0.42	3	20	.100	0	0.00	3	7	0.25	0	10	0.83	4	6	10	0.83	1	0	15.0
4	Johnson, Josie	12	2	0.17	0	6	.333	58	4.83	0	4	0.00	0	20	1.67	0	0	0	0.00	0	4	2.0
6	Miller, Ari	12	37	3.08	7	79	.380	2	0.17	5	6	0.42	0	10	0.83	0	10	10	0.83	1	0	47.0
8	Blake, Kaley	12	0	0.00	0	3	.000	52	4.33	0	2	0.00	0	17	1.42	0	0	0	0.00	0	1	0.0
9	Goba, Kati	7	0	0.00	0	0	.000	1	0.14	0	1	0.00	1	5	0.71	0	0	0	0.00	0	0	0.0
10	Beneby, Czhen	12	13	1.08	8	40	.125	0	0.00	0	0	0.00	0	4	0.33	5	4	9	0.75	0	0	20.0
11	Schmitz, Natalie	12	35	2.92	12	109	.211	0	0.00	1	1	0.08	3	8	0.67	0	3	3	0.25	1	0	37.5
13	Erdmann, Kara	12	0	0.00	1	1	-1.000	7	0.58	0	0	0.00	1	35	2.92	0	0	0	0.00	0	0	0.0
14	Malone, Madi	12	29	2.42	16	92	.141	1	0.08	1	4	0.08	11	20	1.67	1	5	6	0.50	0	1	33.5
15	Schrader, Sarah	6	0	0.00	0	3	.000	0	0.00	2	0	0.33	2	6	1.00	0	0	0	0.00	1	0	2.0
16	Scott, Rachel	5	1	0.20	1	5	.000	0	0.00	0	0	0.00	0	2	0.40	0	1	1	0.20	0	0	1.5
<b>MILWAUKEE</b>		<b>12</b>	<b>131</b>	<b>10.92</b>	<b>54</b>	<b>381</b>	<b>.202</b>	<b>121</b>	<b>10.08</b>	<b>12</b>	<b>25</b>	<b>1.00</b>	<b>20</b>	<b>137</b>	<b>11.42</b>	<b>12</b>	<b>32</b>	<b>28</b>	<b>2.33</b>	<b>4</b>	<b>6</b>	<b>171.0</b>
<b>Opponents</b>		<b>12</b>	<b>172</b>	<b>14.33</b>	<b>67</b>	<b>405</b>	<b>.259</b>	<b>164</b>	<b>13.67</b>	<b>20</b>	<b>31</b>	<b>1.67</b>	<b>12</b>	<b>170</b>	<b>14.17</b>	<b>3</b>	<b>38</b>	<b>22</b>	<b>1.83</b>	<b>2</b>	<b>2</b>	<b>214.0</b>

## FINAL 2022 HORIZON LEAGUE STATISTICS

##	Player	SP	Attack					Set		Serve			RE	Dig		Blocking						PTS
			K	K/S	E	TA	PCT	A	A/S	SA	SE	SA/S		DIG	DIG/S	BS	BA	TOT/S	BLK/S	BE	BHE	
1	Catalano, Tatum	29	14	0.48	4	38	.263	2	0.07	0	0	0.00	0	7	0.24	1	14	15	0.52	2	1	22.0
2	Geurts, Bri	61	105	1.72	46	250	.236	7	0.11	10	10	0.16	1	19	0.31	2	54	56	0.92	5	0	144.0
3	Graves, Lakyn	9	2	0.22	2	6	.000	0	0.00	0	1	0.00	0	3	0.33	1	8	9	1.00	0	0	7.0
4	Johnson, Josie	61	7	0.11	1	35	.171	296	4.85	7	17	0.11	0	103	1.69	0	1	1	0.02	0	6	14.5
5	Moan, Maddie	32	19	0.59	8	55	.200	1	0.03	0	0	0.00	0	3	0.09	0	16	16	0.50	0	0	27.0
6	Miller, Ari	44	160	3.64	39	333	.363	2	0.05	7	12	0.16	0	15	0.34	11	40	51	1.16	4	0	198.0
7	Erdmann, Kara	49	1	0.02	0	7	.143	33	0.67	6	11	0.12	28	154	3.14	0	0	0	0.00	0	0	7.0
8	Blake, Kaley	61	7	0.11	0	29	.241	352	5.77	17	7	0.28	0	126	2.07	0	0	0	0.00	1	4	24.0
10	Beneby, Czhen	60	116	1.93	56	264	.227	2	0.03	0	0	0.00	0	24	0.40	9	40	49	0.82	10	0	145.0
11	Schmitz, Natalie	61	182	2.98	69	475	.238	5	0.08	7	6	0.11	4	40	0.66	1	21	22	0.36	4	0	200.5
14	Malone, Madi	61	173	2.84	75	536	.183	16	0.26	6	8	0.10	24	175	2.87	0	23	23	0.38	1	0	190.5
15	Schrader, Sarah	53	16	0.30	13	88	.034	27	0.51	10	14	0.19	29	162	3.06	0	3	3	0.06	3	1	27.5
17	Jakscht, Mati	24	2	0.08	0	9	.222	3	0.13	0	1	0.00	6	41	1.71	0	0	0	0.00	0	0	2.0
<b>MILWAUKEE</b>		<b>61</b>	<b>804</b>	<b>13.18</b>	<b>313</b>	<b>2125</b>	<b>.231</b>	<b>746</b>	<b>12.23</b>	<b>70</b>	<b>87</b>	<b>1.15</b>	<b>113</b>	<b>872</b>	<b>14.30</b>	<b>25</b>	<b>220</b>	<b>135</b>	<b>2.21</b>	<b>30</b>	<b>12</b>	<b>1,009.0</b>
<b>Opponents</b>		<b>61</b>	<b>804</b>	<b>13.18</b>	<b>324</b>	<b>2128</b>	<b>.226</b>	<b>749</b>	<b>12.28</b>	<b>113</b>	<b>122</b>	<b>1.85</b>	<b>70</b>	<b>850</b>	<b>13.93</b>	<b>29</b>	<b>227</b>	<b>142.5</b>	<b>2.34</b>	<b>22</b>	<b>15</b>	<b>1,059.5</b>

## 2023 SEASON BESTS

## KILLS

Team: 65 vs. Villanova (Aug. 26)  
 Individual: 19 (Ari Miller) vs. Villanova (Aug. 26)  
 Opponent: 70 vs. Villanova (Aug. 26)

## ATTACK PERCENTAGE (min. 10 kills)

Team: .290 (65-20-155) vs. Villanova (Aug. 26)  
 Individual: .455 (19-4-33; Ari Miller) vs. Villanova (Aug. 26)  
 Opponent: .291 (70-22-165) vs. Villanova (Aug. 26)

## ASSISTS

Team: 60 vs. Villanova (Aug. 26)  
 Individual: 30 (Josie Johnson) vs. Villanova (Aug. 26)  
 Opponent: 67 vs. Villanova (Aug. 26)

## ACES

Team: 6 vs. Villanova (Aug. 26)  
 Individual: 2 (Four Times)  
 Opponent: 8 vs. Villanova (Aug. 26)

## DIGS

Team: 61 vs. Villanova (Aug. 26)  
 Individual: 16 (Kara Erdmann) vs. Villanova (Aug. 26)  
 Opponent: 60 at Western Michigan (Aug. 25)

## TOTAL BLOCKS

Team: 13 at Western Michigan (Aug. 25)  
 Individual: 5 (C. Beneby) vs. Western Michigan (Aug. 25)  
 Opponent: 9 vs. Villanova (Aug. 26)

## 2023 SCHEDULE AND RESULTS

Date	Opponent	Score	Set-by-set	Overall	Horizon Time	Att.
<i>WESTERN MICHIGAN TOURNAMENT</i>						
Aug. 25	at Western Michigan	L, 1-3	15-25, 25-21, 20-25, 12-25	0-1	N/A	251
Aug. 26	vs. Northern Iowa	L, 0-3	22-25, 23-25, 20-25	0-2	N/A	117
Aug. 26	vs. Villanova	L, 2-3	22-25, 25-22, 23-25, 25-18, 15-17	0-3	N/A	153
<i>ST. THOMAS TOURNAMENT</i>						
Sept. 1	vs. California Baptist				11:00 am	
Sept. 1	vs. Montana State				4:00 pm	
Sept. 2	at St. Thomas (Minn.)				2:00 pm	
<b>Sept. 9</b>	<b>NORTHWESTERN</b>				<b>6:00 pm</b>	
<i>SIUE TOURNAMENT</i>						
Sept. 8	vs. Idaho				10:00 am	
Sept. 8	vs. Western Illinois				3:00 pm	
Sept. 9	at SIU-Edwardsville				1:00 pm	
<b>Sept. 12</b>	<b>DEPAUL</b>				<b>6:00 pm</b>	
<b>Sept. 14</b>	<b>MARQUETTE</b>				<b>6:00 pm</b>	
<b>Sept. 15</b>	<b>AIR FORCE</b>				<b>6:00 pm</b>	
Sept. 19	at Chicago State				6:00 pm	
<b>Sept. 22</b>	<b>IUPUI *</b>				<b>6:00 pm</b>	
<b>Sept. 23</b>	<b>PURDUE FORT WAYNE *</b>				<b>4:00 pm</b>	
Sept. 29	at Robert Morris *				5:00 pm	
Sept. 30	at Youngstown State *				1:00 pm	
<b>Oct. 3</b>	<b>GREEN BAY *</b>				<b>6:00 pm</b>	
<b>Oct. 6</b>	<b>NORTHERN KENTUCKY *</b>				<b>6:00 pm</b>	
<b>Oct. 7</b>	<b>WRIGHT STATE *</b>				<b>4:00 pm</b>	
Oct. 13	at Oakland *				5:00 pm	
Oct. 14	at Cleveland State *				3:00 pm	
Oct. 20	at Purdue Fort Wayne *				5:00 pm	
Oct. 21	at IUPUI *				3:00 pm	
<b>Oct. 27</b>	<b>YOUNGSTOWN STATE *</b>				<b>6:00 pm</b>	
<b>Oct. 28</b>	<b>ROBERT MORRIS *</b>				<b>4:00 pm</b>	
Oct. 31	at Green Bay *				6:00 pm	
Nov. 3	at Wright State *				5:00 pm	
Nov. 4	at Northern Kentucky *				2:00 pm	
<b>Nov. 10</b>	<b>CLEVELAND STATE *</b>				<b>6:00 pm</b>	
<b>Nov. 11</b>	<b>OAKLAND *</b>				<b>4:00 pm</b>	
Nov. 17	Horizon League Quarterfinals ^				TBA	
Nov. 18	Horizon League Semifinals ^				TBA	
Nov. 19	Horizon League Championship ^				TBA	

Home Games in **BOLD** | \* Horizon League Match | ^ Horizon League Tournament

## SEASON &amp; CAREER HIGHS

**1 Tatum Catalano | Jr. | OH/RS****2023 Season Highs**

Kills .....	n/a
Attempts .....	n/a
Hitting % .....	n/a
Blocks .....	n/a
Digs .....	n/a
Aces .....	n/a
Assists .....	n/a

**Career Highs**

Kills .....	4 (Twice)
Attempts .....	12 (9/9/22 vs. LSU)
Hitting % ..	1.000 [1-0-1] (10/7/22 vs. CSU)
Blocks .....	4 (Twice)
Digs .....	4 (10/8/22 vs. OAK)
Aces .....	same
Assists .....	1 (Twice)

**4 Josie Johnson | So. | S****2023 Season Highs**

Kills .....	1 (Twice)
Attempts .....	3 (8/25 at West. Michigan)
Hitting % ....	1.000 [1-0-1] (8/26 vs. 'Nova)
Blocks .....	n/a
Digs .....	8 (8/26 vs. Villanova)
Aces .....	n/a
Assists .....	30 (8/26 vs. Villanova)

**Career Highs**

Kills .....	2 (Twice)
Attempts .....	6 (9/23/22 vs. YSU)
Hitting % .....	1.000 [1-0-1] (Twice)
Blocks .....	1 (Twice)
Digs .....	15 (9/2/22 vs. Utah)
Aces .....	2 (9/27/22 at IUPUI)
Assists .....	same

**9 Kati Goba | Fr. | DS****2023 Season Highs**

Kills .....	n/a
Attempts .....	n/a
Hitting % .....	n/a
Blocks .....	n/a
Digs .....	5 (8/25 at West. Michigan)
Aces .....	n/a
Assists .....	1 (8/25 at West. Michigan)

**Career Highs**

Kills .....	n/a
Attempts .....	n/a
Hitting % .....	n/a
Blocks .....	n/a
Digs .....	same
Aces .....	n/a
Assists .....	same

**2 Bri Geurts | Jr. | RS/MB****2023 Season Highs**

Kills .....	4 (8/26 vs. UNI)
Attempts .....	12 (8/26 vs. UNI)
Hitting % .	.750 [3-0-4] (8/25 vs. Villanova)
Blocks .....	3 (8/25 at West. Michigan)
Digs .....	n/a
Aces .....	n/a
Assists .....	n/a

**Career Highs**

Kills .....	13 (Twice)
Attempts .....	30 (9/17/22 vs. New Mexico St.)
Hitting % .....	.750 [3-0-4] (Twice)
Blocks .....	9 (10/8/22 vs. Oakland)
Digs .....	6 (9/2/22 vs. Utah)
Aces .....	2 (Five Times)
Assists .....	3 (Twice)

**6 Ari Miller | Gr. | MB****2023 Season Highs**

Kills .....	19 (8/26 vs. Villanova)
Attempts .....	33 (8/26 vs. Villanova)
Hitting % ...	.500 [19-4-33] (8/26 vs. 'Nova)
Blocks .....	4 (8/26 vs. Villanova)
Digs .....	6 (8/26 vs. UNI)
Aces .....	2 (Twice)
Assists .....	1 (Twice)

**Career Highs**

Kills .....	30 (9/17/21 vs. West. Michigan)
Attempts .....	50 (9/17/21 vs. West. Michigan)
Hitting % .	.688 [11-0-16] (9/24/22 vs. RM)
Blocks .....	10 (10/13/19 at Oakland)
Digs .....	6 (Twice)
Aces .....	3 (Three Times)
Assists .....	2 (Five Times)

**10 Czhen Beneby | So. | MB****2023 Season Highs**

Kills .....	5 (8/26 vs. Villanova)
Attempts .....	17 (8/26 vs. Villanova)
Hitting % .....	.182 [3-4-2] (8/26 vs. UNI)
Blocks .....	5 (8/25 at West. Michigan)
Digs .....	4 (8/26 vs. Villanova)
Aces .....	n/a
Assists .....	n/a

**Career Highs**

Kills .....	15 (11/1/22 vs. PFW)
Attempts .....	26 (11/5/22 at CSU)
Hitting % ..	.800 [8-0-10] (9/23/22 vs. YSU)
Blocks .....	6 (Three Times)
Digs .....	5 (10/22 at YSU)
Aces .....	same
Assists .....	1 (Three Times)

**3 Lakyn Graves | Jr. | MB****2023 Season Highs**

Kills .....	2 (Twice)
Attempts .....	7 (Twice)
Hitting % .	.167 [2-1-6] (8/26 vs. Villanova)
Blocks .....	4 (Twice)
Digs .....	6 (8/25 at West. Michigan)
Aces .....	2 (8/26 vs. Villanova)
Assists .....	n/a

**Career Highs**

Kills .....	10 (9/16/21 vs. Weber St.)
Attempts .....	30 (9/16/21 vs. Weber St.)
Hitting % .	.600 [7-1-10] (9/23/21 vs. STM)
Blocks .....	13 (9/3/21 vs. Arizona State)
Digs .....	same
Aces .....	same
Assists .....	same

**8 Kaley Blake | Sr. | S****2023 Season Highs**

Kills .....	n/a
Attempts .....	2 (8/26 vs. Villanova)
Hitting % .....	.000 [0-0-1] (8/26 vs. UNI)
Blocks .....	n/a
Digs .....	11 (8/26 vs. Villanova)
Aces .....	n/a
Assists .....	26 (8/26 vs. Villanova)

**Career Highs**

Kills .....	2 (Twice)
Attempts .....	6 (Twice)
Hitting % .....	1.000 [2-0-2, 1-0-1] (4x)
Blocks .....	1 (9/24/21 at PFW)
Digs .....	17 (10/1/22 at NKU)
Aces .....	4 (9/27/22 at IUPUI)
Assists .....	33 (8/28/22 at Notre Dame)

**11 Natalie Schmitz | So. | OH****2023 Season Highs**

Kills .....	17 (8/26 vs. Villanova)
Attempts .....	42 (8/26 vs. Villanova)
Hitting % ...	.286 [17-5-42] (8/26 vs. 'Nova)
Blocks .....	1 (Three Times)
Digs .....	3 (Twice)
Aces .....	1 (8/25 vs. UNI)
Assists .....	n/a

**Career Highs**

Kills .....	same
Attempts .....	42 (Twice)
Hitting % .	.471 [9-1-17] (9/20/22 vs. PFW)
Blocks .....	4 (9/27/22 at IUPUI)
Digs .....	6 (9/27/22 at IUPUI)
Aces .....	3 (10/8/22 vs. OAK)
Assists .....	1 (Six Times)

## SEASON &amp; CAREER HIGHS

**12 Bella Lipski | Fr. | MB****2023 Season Highs**

Kills .....	n/a
Attempts .....	n/a
Hitting % .....	n/a
Blocks .....	n/a
Digs .....	n/a
Aces .....	n/a
Assists .....	n/a

**Career Highs**

Kills .....	n/a
Attempts .....	n/a
Hitting % .....	n/a
Blocks .....	n/a
Digs .....	n/a
Aces .....	n/a
Assists .....	n/a

**15 Sarah Schrader | Sr. | DS****2023 Season Highs**

Kills .....	n/a
Attempts .....	3 (8/26 vs. Villanova)
Hitting % .....	.000 [0-0-3] (8/26 vs. 'Nova)
Blocks .....	n/a
Digs .....	5 (8/26 vs. Villanova)
Aces .....	n/a
Assists .....	n/a

**Career Highs**

Kills .....	5 (11/5/22 at CSU)
Attempts .....	24 (3/22/21 at PFW)
Hitting % .....	1.000 [1-0-1] (9/17/21 at But.)
Blocks .....	2 (Twice)
Digs .....	23 (9/17/22 vs. New Mexico St.)
Aces .....	4 (10/22/21 vs. IUPUI)
Assists .....	9 (8/28/22 at Notre Dame)

**13 Kara Erdmann | So. | DS****2023 Season Highs**

Kills .....	n/a
Attempts .....	1 (8/25 at West. Michigan)
Hitting % .....	-1.000 [0-1-1] (8/25 at WMU)
Blocks .....	n/a
Digs .....	16 (8/26 vs. Villanova)
Aces .....	n/a
Assists .....	3 (Twice)

**Career Highs**

Kills .....	1 (Twice)
Attempts .....	2 (Twice)
Hitting % .....	1.000 [1-0-1] (Twice)
Blocks .....	same
Digs .....	28 (11/18/22 vs. CSU)
Aces .....	2 (11/1/22 vs. PFW)
Assists .....	5 (9/30/22 at WSU)

**16 Rachel Scott | So. | RS****2023 Season Highs**

Kills .....	1 (8/26 vs. Villanova)
Attempts .....	5 (8/26 vs. Villanova)
Hitting % .....	.000 [1-1-5] (8/26 vs. 'Nova)
Blocks .....	1 (8/26 vs. Villanova)
Digs .....	2 (8/26 vs. Villanova)
Aces .....	n/a
Assists .....	n/a

**Career Highs**

Kills .....	2 (Four Times)
Attempts .....	14 (9/2/22 vs. Utah)
Hitting % .....	.111 [2-1-9] (8/26/22 vs. MSU)
Blocks .....	4 (9/2/22 vs. Bradley)
Digs .....	4 (9/2/22 vs. Bradley)
Aces .....	same
Assists .....	same

**14 Madi Malone | Jr. | OH****2023 Season Highs**

Kills .....	17 (8/26 vs. Villanova)
Attempts .....	42 (8/26 vs. Villanova)
Hitting % .....	.286 [17-5-42] (8/26 vs. 'Nova)
Blocks .....	3 (8/25 at West. Michigan)
Digs .....	10 (8/25 at West. Michigan)
Aces .....	1 (8/26 vs. Villanova)
Assists .....	1 (8/25 at West. Michigan)

**Career Highs**

Kills .....	29 (10/1/21 vs. WSU)
Attempts .....	66 (10/1/21 vs. WSU)
Hitting % .....	.467 [9-2-15] (9/11/21 at C-Ark)
Blocks .....	3 (Five Times)
Digs .....	18 (11/5/22 at CSU)
Aces .....	4 (11/11/21 at RMU)
Assists .....	3 (9/24/22 vs. RMU)

**17 Mati Jakscht | Gr. | DS****2023 Season Highs**

Kills .....	n/a
Attempts .....	n/a
Hitting % .....	n/a
Blocks .....	n/a
Digs .....	n/a
Aces .....	n/a
Assists .....	n/a

**Career Highs**

Kills .....	2 (10/18/22 vs. IUPUI)
Attempts .....	5 (3/22/21 at PFW)
Hitting % .....	1.000 [1-0-1] (Three Times)
Blocks .....	same
Digs .....	17 (3/8/21 at NKU)
Aces .....	3 (10/18/19 vs. IUPUI)
Assists .....	12 (2/9/21 vs. GB)

## ACTIVE CAREER LEADERS

**Matches Played**

Ari Miller	105
Mati Jakscht	82
Kaley Blake	66

**Consecutive Matches Played**

Madi Malone	64
Five Players Tied	33
<i>(Beneby, Blake, Geurts, Johnson, Schmitz)</i>	

**Sets Played**

Ari Miller	384
Mati Jakscht	250
Madi Malone	233

**Kills**

Ari Miller	1217
Madi Malone	706
Natalie Schmitz	324

**Double-Figure Kills**

Ari Miller	71
Madi Malone	42
Natalie Schmitz	17

**Digs**

Madi Malone	601
Sarah Schrader	558
Mati Jakscht	495

**Double-Figure Digs**

Madi Malone	33
Sarah Schrader	28
Mati Jakscht	16

**Total Blocks**

Ari Miller	326
Bri Guerts	123
Czhen Beneby	89

**Assists**

Kaley Blake	1165
Josie Johnson	549
Mati Jakscht	109

**Double-Doubles**

Madi Malone	23
Kaley Blake	15
Josie Johnson	2

**Service Aces**

Sarah Schrader	49
Ari Miller	39
Kaley Blake	36
Madi Malone	35

## MILWAUKEE MATCH-BY-MATCH



2023-24 Milwaukee Women's Volleyball  
Team Match-by-Match  
All games

Date	Opponent	SP	Attack				Set			Serve				Recept			DIG	Blocking				BHE	POINTS	SCORE
			K	E	TA	PCT	A	TA	PCT	SA	SE	TA	PCT	RE	TA	PCT		BS	BA	BE	TOTAL			
08/25/2023	at Western Mich.	4	37	21	125	.128	35	119	.294	2	12	73	.836	7	86	.919	43	7	12	0	13.0	3	52.0	1-3
08/26/2023	vs UNI	3	29	13	101	.158	26	94	.277	4	8	67	.881	5	65	.923	33	4	10	2	9.0	0	42.0	0-3
08/26/2023	vs Villanova	5	65	20	155	.290	60	148	.405	6	5	111	.955	8	92	.913	61	1	10	2	6.0	3	77.0	2-3
<b>Totals</b>		<b>12</b>	<b>131</b>	<b>54</b>	<b>381</b>	<b>.202</b>	<b>121</b>	<b>361</b>	<b>.335</b>	<b>12</b>	<b>25</b>	<b>251</b>	<b>.900</b>	<b>20</b>	<b>243</b>	<b>.918</b>	<b>137</b>	<b>12</b>	<b>32</b>	<b>4</b>	<b>28.0</b>	<b>6</b>	<b>171.0</b>	
<b>Opponents</b>		<b>12</b>	<b>172</b>	<b>67</b>	<b>405</b>	<b>.259</b>	<b>164</b>	<b>396</b>	<b>.414</b>	<b>20</b>	<b>31</b>	<b>274</b>	<b>.887</b>	<b>12</b>	<b>226</b>	<b>.947</b>	<b>170</b>	<b>3</b>	<b>38</b>	<b>2</b>	<b>22.0</b>	<b>2</b>	<b>214.0</b>	

## Team Averages

Sets Played	Kills per set	Assists per set	Service aces per set	Digs per set	Blocks per set	Points per set	Ball handling error per set	Reception errors per set
12	10.92	10.08	1.00	11.42	2.33	14.25	0.50	1.67

# OPPONENT MATCH-BY-MATCH



## 2023-24 Milwaukee Women's Volleyball Opponents Match-by-Match All games

Date	Opponent	SP	Attack				Set			Serve				Recept			DIG	Blocking				BHE	POINTS	SCORE
			K	E	TA	PCT	A	TA	PCT	SA	SE	TA	PCT	RE	TA	PCT		BS	BA	BE	TOTAL			
08/25/2023	at Western Mich.	4	53	24	129	.225	50	125	.400	7	9	95	.905	2	61	.967	60	2	8	1	6.0	0	66.0	1-3
08/26/2023	vsUNI	3	49	21	111	.252	47	108	.435	5	8	73	.890	4	59	.932	51	0	14	0	7.0	1	61.0	0-3
08/26/2023	vsVillanova	5	70	22	165	.291	67	163	.411	8	14	106	.868	6	106	.943	59	1	16	1	9.0	1	87.0	2-3
<b>Opponent totals</b>		<b>12</b>	<b>172</b>	<b>67</b>	<b>405</b>	<b>.259</b>	<b>164</b>	<b>396</b>	<b>.414</b>	<b>20</b>	<b>31</b>	<b>274</b>	<b>.887</b>	<b>12</b>	<b>226</b>	<b>.947</b>	<b>170</b>	<b>3</b>	<b>38</b>	<b>2</b>	<b>22.0</b>	<b>2</b>	<b>214.0</b>	
<b>Milwaukee totals</b>		<b>12</b>	<b>131</b>	<b>54</b>	<b>381</b>	<b>.202</b>	<b>121</b>	<b>361</b>	<b>.335</b>	<b>12</b>	<b>25</b>	<b>251</b>	<b>.900</b>	<b>20</b>	<b>243</b>	<b>.918</b>	<b>137</b>	<b>12</b>	<b>32</b>	<b>4</b>	<b>28.0</b>	<b>6</b>	<b>171.0</b>	

### Team Averages

Sets Played	Kills per set	Assists per set	Service aces per set	Digs per set	Blocks per set	Points per set	Ball handling error per set	Reception errors per set
12	14.33	13.67	1.67	14.17	1.83	17.83	0.17	1.00